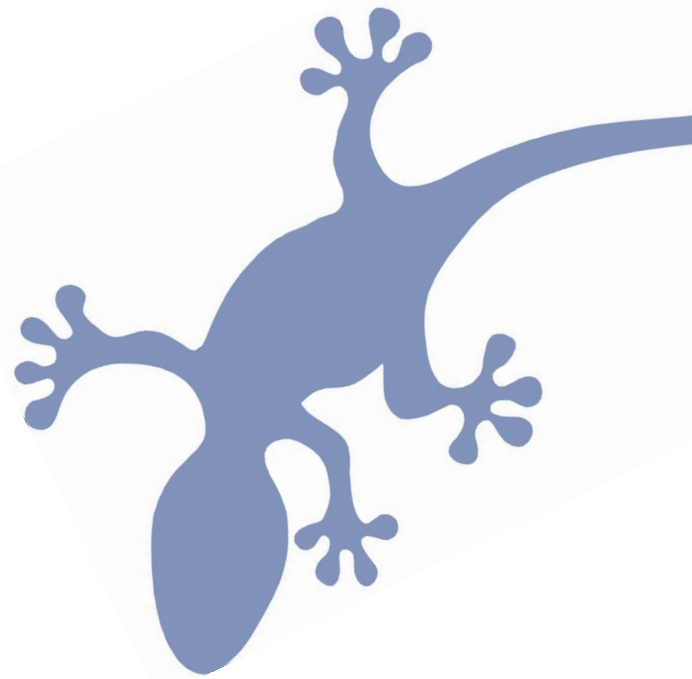
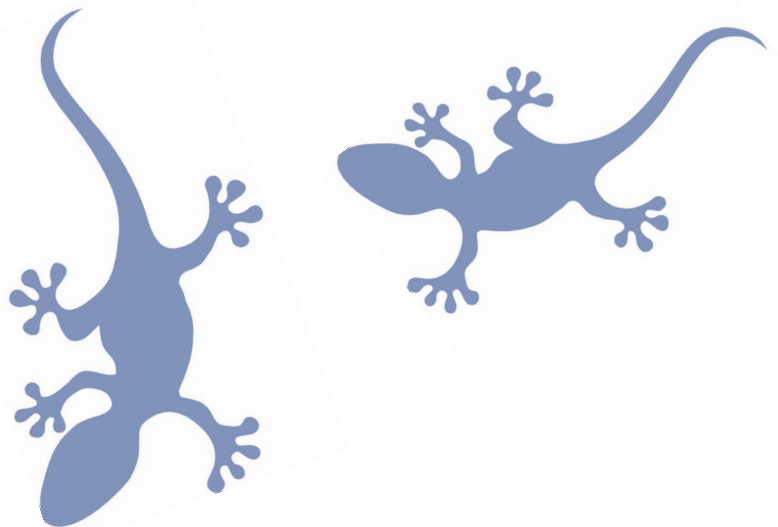


ecoguide AUSTRALIA CERTIFIED GUIDE



A Certification Program for the
Australian Nature Guiding Industry

Guiding Assessment - Edition 3.1



SAVANNAH GUIDES



Protectors and Interpreters of the Outback

Guiding Assessment Process

The **Guiding Assessment** requires Applicants to:

1. Submit an **Activity Plan** which outlines your tour elements. A template is provided on the following page, or you can include these elements in your own format.
2. **Demonstrate competency** in a tour scenario in:
 - Interpretation Skills
 - Safety Awareness
 - Group Management Skills
 - Minimal Impact Guiding

An **EcoGuide Assessor** can undertake this assessment with you either:

- a) **In Person** – Observing you leading a tour or mock tour of at least 30 minutes duration. This may involve a cost for the travel and time of the Assessor.

or

- b) **By Video** – Take a 30 minute video on your phone of an actual or mock tour, download it to your computer and send it to info@savannah-guides.com.au via Hightail, Dropbox or similar file sharing software. This will be assessed for a \$25 fee.

or

- c) **By Interview** – In specific cases an interview situation may be used, eg: for guides of language tours, extended, exclusive or remote tours. This will be assessed for a \$25 fee.

EcoGuide is committed to welcoming high standard Tour Guides and Rangers into the EcoGuide program to build a national network of professional nature and culture guides who have ongoing recognition and professional development opportunities.

Please contact us with any questions or special circumstances.

For further information please contact:

Savannah Guides

Email: info@savannah-guides.com.au

Tel: 0408 772 513



Activity Plan

Please send this plan for a typical tour / activity you conduct to:

info@savannah-guides.com.au or your EcoGuide Assessor before your Guiding Assessment.

You can use this template or include these elements in your own format.

Location of Tour:
Duration of Tour:
Type of Tour:
Guest Profile (nationalities, ages, group type, interests etc):
Tour Theme / Main Take-Home Message:
Introductory Commentary Points:
Main Tour Commentary Topics:
Concluding Commentary Points:
Risk / Safety Factors and Instructions to Guests:
Possible Problems and Contingencies:
Props and Why they are Used:
Feedback Mechanisms for Guide:



Guiding Assessment Form

This Form will be used by your EcoGuide Assessor to verify your practical competency. The Assessor is asked to recommend areas for ongoing improvement in their comments.

Name of Applicant: _____

Name of Assessor: _____

Date of Assessment: _____

Skills / Knowledge to be Demonstrated	<input type="checkbox"/>
Clearly stated Main Take-Home Message / Theme to Commentary: Assessor Comment: _____	
Organised Delivery Structure pointing out Links to Main Message / Theme: Assessor Comment: _____	
Engaging Communication Style including Verbal and Non-Verbal Techniques: Assessor Comment: _____	
Awareness and Instructions regarding Safety Issues : Assessor Comment: _____	
Group Management Skills including Clear Instructions and Group Movement: Assessor Comment: _____	
Catering to the Special Needs of Individuals: Assessor Comment: _____	
Integrating Minimal Impact Practices and Messages : Assessor Comment: _____	
Guest Interaction including Prop Use and Questioning: Assessor Comment: _____	
Final EcoGuide Assessor Comments: _____ _____ _____	

EcoGuide Assessor Signature: _____

EcoGuide Assessor to send completed Guide Assessment Form to: info@savannah-guides.com.au